

# SITECO LINEAR LIGHTING SOLUTIONS

## GESSLER FITS IN ANY SYSTEM

The perfect emergency lighting for the SITECO linear lighting system of the MODARIO® series. All emergency lighting components are integrated in a SITECO module carrier. This fits perfectly into the overall system, both technically and visually. Two escape sign luminaires with recognition ranges of 24 m and 31 m are available for marking escape and rescue routes. There are also two escape sign cubes with recognition ranges of 25 m and 35 m.

In order to illuminate the escape and rescue route correctly according to standards, a variety of high-performance lenses are available. Whichever lens you choose, the illumination of your escape and rescue route complies with the specifications of EN 1838.

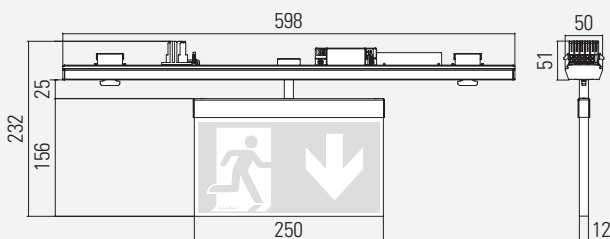


EMERGENCY LUMINAIRE with lens of your choice

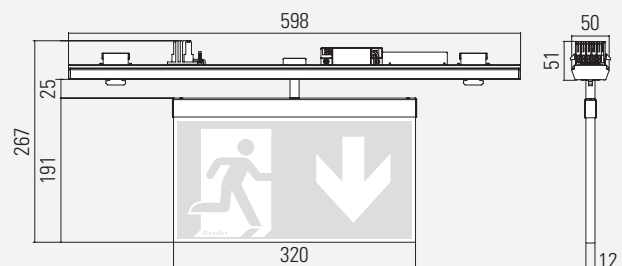


# MODARIO®

EXIT SIGN LUMINAIRE (24 m)

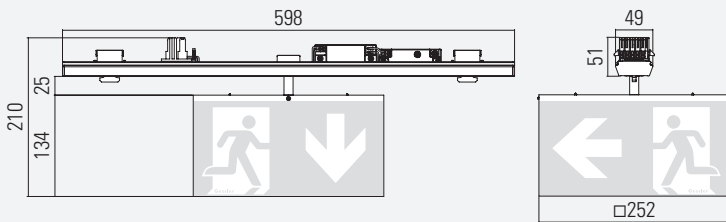


EXIT SIGN LUMINAIRE (31 m)



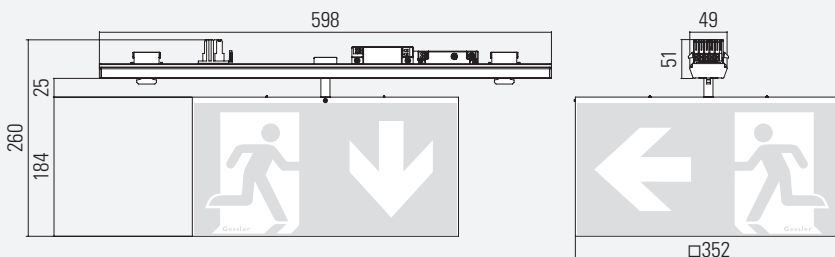


EXIT SIGN CUBE (25 m)



MODARIO®

EXIT SIGN CUBE (35 m)



# SITECO LINEAR LIGHTING SOLUTIONS

## GESSLER PASST IN JEDES SYSTEM

The perfect emergency lighting for the SITECO linear lighting system of the LICROSS® series. All emergency lighting components are integrated in a SITECO module carrier. This fits perfectly into the overall system, both technically and visually. Two escape sign luminaires with recognition ranges of 24 m and 31 m are available for marking escape and rescue routes. There are also two escape sign cubes with recognition ranges of 25 m and 35 m.

In order to illuminate the escape and rescue route correctly according to standards, a variety of high-performance lenses are available. Whichever lens you choose, the illumination of your escape and rescue route complies with the specifications of EN 1838.

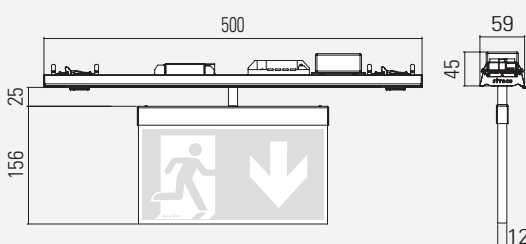


### EMERGENCY LUMINAIRE with lens of your choice

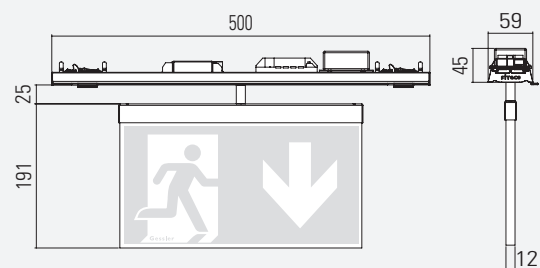


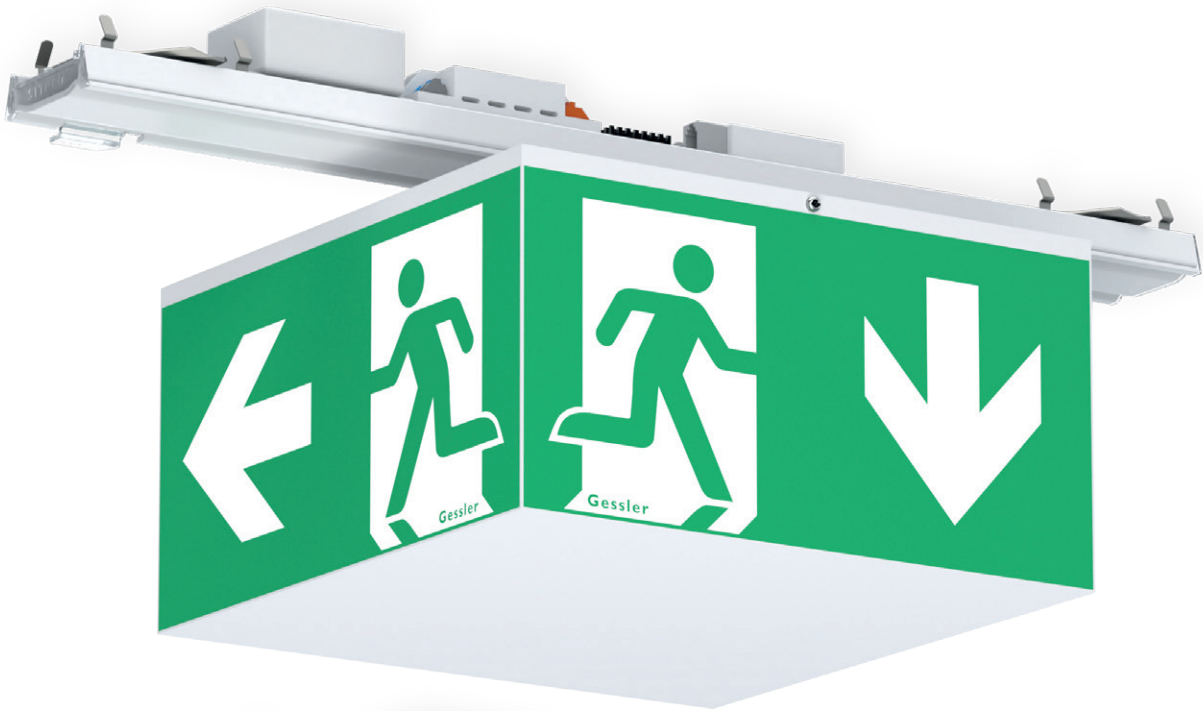
# LICROSS®

### EXIT SIGN LUMINAIRE (24 m)

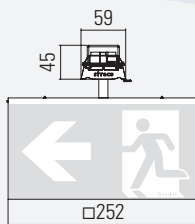
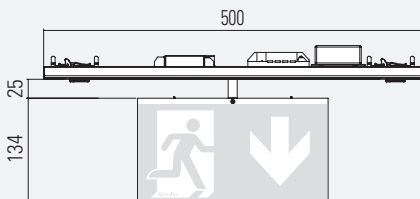


### EXIT SIGN LUMINAIRE (31 m)

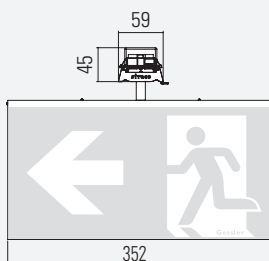
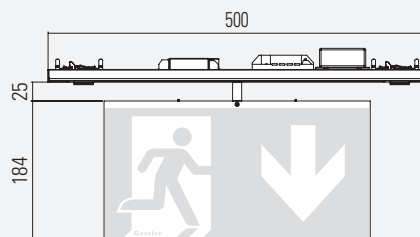




EXIT SIGN CUBE (25 m)



EXIT SIGN CUBE (35 m)



LICROSS®

# LENS VERSIONS

## WHICH LENS WOULD YOU LIKE?

Thanks to the modular design of our emergency lighting insert, all the high-performance lenses mentioned here are compatible with all module carriers of the corresponding manufacturers.

### TECHNICAL DATA

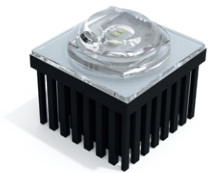
Light source	LED
Connected load (AC/DC)	8.5 VA / 5,2 W

### VERSION

without monitoring	•
with monitoring	•
DALI monitoring	



## SYMMETRICAL LENSES FOR OPEN AREAS



S1 LENS  
Installation height  
up to 12 m

---



S2 LENS  
Installation height  
up to 18 m

---



S3 LENS  
Installation height  
up to 30 m

## ASYMMETRICAL LENSES FOR ESCAPE ROUTES



A1 LENS  
Installation height  
up to 11 m

---



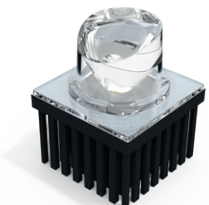
A2 LENS  
Installation height  
up to 16 m

---



A3 LENS  
Installation height up  
to 30 m

## 5 LX LENSE FOR FOCUSED LIGHT



F1 LENS  
Installation height up  
to 3,5 m



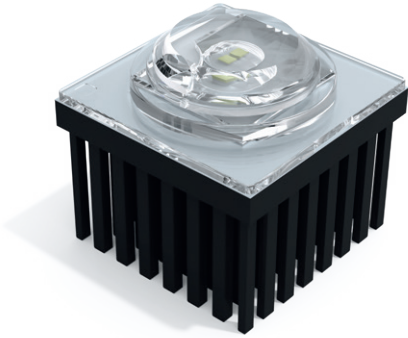
# SYMMETRICAL LENSES

LIGHTING DATA (EN 1838)

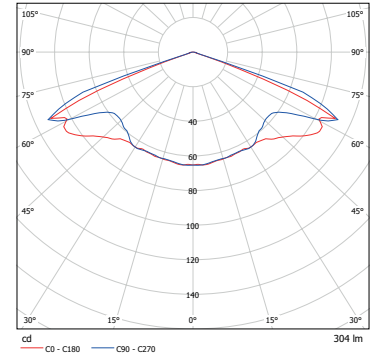
## VARIABLE HEIGHTS

Three symmetrical lenses are available. These are optimised for different mounting heights (2 to 30 m). Thanks to the modular design of our lens luminaire series, all the lenses shown are compatible with all enclosures.

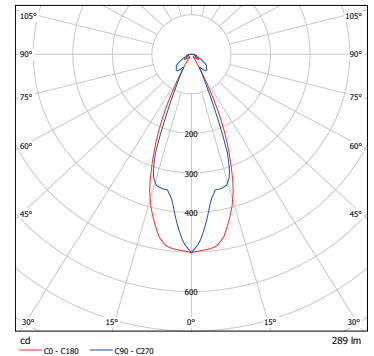
## SYMMETRICAL LENSES FOR OPEN AREAS



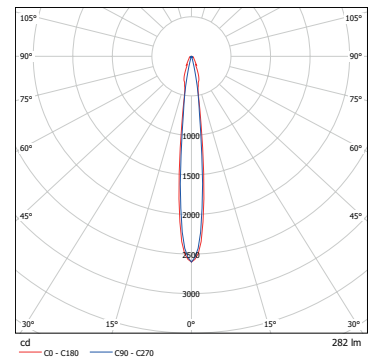
S1 LENS  
Installation  
height up to  
12 m



S2 LENS  
Installation  
height up to  
18 m



S3 LENS  
Installation  
height up to  
30 m



# SYMMETRICAL LENSES

LIGHTING DATA (EN 1838)

Installation height [m]	1 lx Lighting of escape routes						1 lx Lighting of sales areas (self-service stores)						0.5 lx Lighting of open areas > 60m <sup>2</sup> (anti-panic lighting)					
	S1 lens	S2 lens	S3 lens	S1 lens	S2 lens	S3 lens	S1 lens	S2 lens	S3 lens	S1 lens	S2 lens	S3 lens	S1 lens	S2 lens	S3 lens	S1 lens	S2 lens	S3 lens
2.00	4.50			10.00			3.25			7.75			4.00			8.25		
2.50	4.75			13.50			4.00			10.75			5.25			11.75		
3.00	4.25			13.50			4.00			10.75			5.25			11.75		
4.00	4.00	2.25		12.75	5.00		3.75	1.75		12.25	5.00		6.00	2.25		14.75	7.00	
5.00	3.75	2.75		11.50	6.00		2.50	2.00		11.25	5.50		5.75	2.50		16.50	6.75	
6.00	3.25	3.00		11.00	6.75		2.50	2.75		11.50	6.00		5.00	2.75		16.50	7.25	
7.00	2.25	3.25		11.25	7.75		2.50	3.00		11.50	6.75		4.75	3.00		14.50	8.00	
8.00	1.50	3.50	2.00	6.50	8.25	4.75	2.75	3.25	1.25	9.00	7.50	5.25	3.75	3.50	2.75	15.25	8.50	5.50
9.00		4.00	2.25		9.00	5.25	1.25	3.50	1.75	10.25	8.25	5.50	2.50	4.00	1.50	17.50	9.00	6.75
10.00		4.00	2.25		9.50	5.50	1.25	3.75	2.25	8.00	8.75	5.75	1.75	4.25	2.00	17.75	9.75	7.00
11.00		4.25	2.50		10.00	5.75	1.00	3.75	1.50	6.75	9.25	6.25	1.75	4.50	2.75	17.50	10.50	7.25
12.00		4.50	2.75		10.50	6.25	1.00	4.00	1.75	5.50	9.50	6.25	1.50	4.75	3.25	17.00	11.25	7.50
13.00		4.75	2.75		11.00	6.50		4.00	1.75		10.00	6.50		4.50	2.75		12.00	8.00
14.00		4.75	2.75		11.50	6.75		3.75	1.75		10.25	6.50		5.00	3.00		12.50	8.25
15.00		4.50	3.00		12.00	7.00		3.75	1.75		10.50	6.75		5.25	3.00		13.00	8.50
16.00		4.00	3.00		12.50	7.50		3.50	2.00		10.75	6.50		5.25	3.00		13.25	8.75
17.00		2.25	3.25		12.75	7.75		3.00	2.00		11.00	7.00		5.50	3.00		13.75	8.75
18.00		1.75	3.25		11.75	8.00		2.00	2.00		11.00	7.00		4.75	3.00		14.00	9.00
19.00			3.25			8.25			2.25			7.25			3.00			9.25
20.00			3.25			8.50			2.25			7.50			3.00			9.50
21.00			3.25			8.75			2.25			7.50			3.00			9.50
22.00			3.25			8.75			3.25			7.50			3.25			9.00
23.00			3.25			9.00			2.50			8.00			3.25			9.50
24.00			3.25			9.25			2.50			8.00			3.25			10.00
25.00			3.25			9.25			2.50			8.25			3.25			10.00
26.00			3.25			9.50			2.75			8.25			3.50			10.25
27.00			3.25			9.50			2.75			8.50			3.75			10.25
28.00			3.25			9.50			2.50			8.75			3.75			10.50
29.00			3.25			9.50			2.50			8.75			3.50			10.75
30.00			3.25			9.50			2.75			9.00			3.75			10.75

This table of distances (in metres) is based on the following factors:  
measurement plane 2 cm, maintenance factor MF = 80 %, reflectance: 0

Dated: April 2021



# ASYMMETRICAL LENSES

LIGHTING DATA (EN 1838)

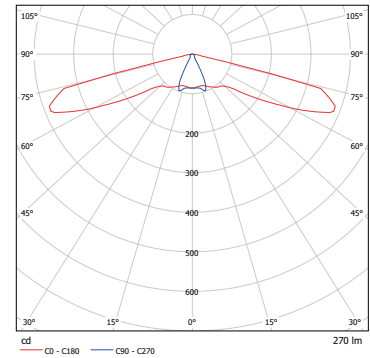
## VARIABLE HEIGHTS

Three asymmetrical lenses are available. These are optimised for different mounting heights (2 to 30 m). Thanks to the modular design of our lens luminaire series, all the lenses shown are compatible with all enclosures.

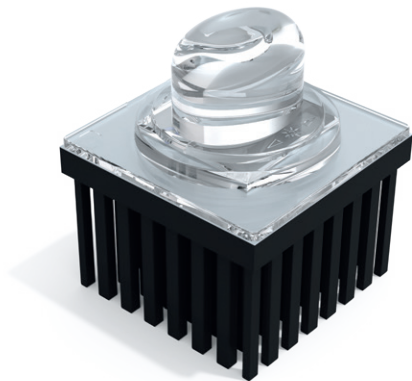
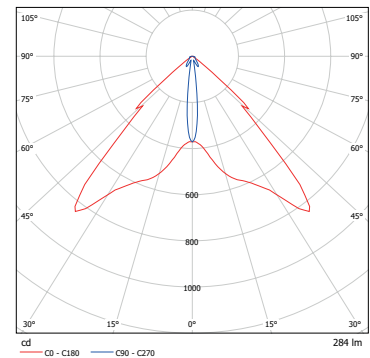
## ASYMMETRICAL LENSES FOR ESCAPE ROUTES



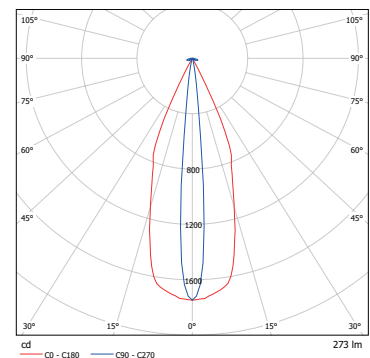
**A1 LENS**  
Installation  
height up to  
11 m



**A2 LENS**  
Installation  
height up to  
16 m



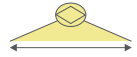


**A3 LENS**  
Installation  
height up to  
30 m



# ASYMMETRICAL LENSES

## LIGHTING DATA (EN 1838)

1 lx Lighting of escape routes									
Installation height [m]									
	A1 lens	A2 lens	A3 lens	A1 lens	A2 lens	A3 lens	A1 lens	A2 lens	A3 lens
2.00	7.25			16.00			14.25		
2.50	8.00			19.00			17.00		
3.00	8.50			21.50			17.25		
4.00	9.50	4.75		24.50	10.50		18.75	10.00	
5.00	8.75	5.75		26.50	12.50		17.50	12.00	
6.00	5.25	6.75		27.50	14.50		10.50	14.00	
7.00	4.50	7.75		24.00	16.75		8.25	16.00	
8.00	4.00	8.75	4.00	16.50	18.75	8.75	2.00	17.75	8.25
9.00	2.75	9.00	4.50	14.50	20.75	9.75		18.00	9.25
10.00	1.00	9.50	5.00	8.50	22.25	10.50		19.50	10.00
11.00	1.00	10.25	5.50	3.75	23.75	11.50		20.50	11.00
12.00		11.00	5.75		25.25	12.50		22.00	10.75
13.00		11.50	6.25		25.75	13.25		23.25	12.75
14.00		12.25	6.75		27.00	14.25		24.50	13.50
15.00		12.75	7.00		28.50	15.25		25.75	14.25
16.00		13.25	7.50		29.75	16.00		26.75	15.00
17.00			7.75			17.00			15.50
18.00			8.00			17.75			16.00
19.00			8.25			18.50			16.50
20.00			8.50			19.25			17.00
21.00			8.50			20.00			17.00
22.00			8.50			20.75			17.00
23.00			8.25			21.50			16.75
24.00			8.25			21.50			16.50
25.00			8.00			22.00			16.25
26.00			8.00			22.25			16.00
27.00			8.00			22.75			16.00
28.00			7.75			23.00			15.75
29.00			7.75			23.25			15.50
30.00			7.50			23.50			15.00

This table of distances (in metres) is based on the following factors:  
measurement plane 2 cm, maintenance factor MF = 80 %, reflectance: 0

Dated: April 2021

# 5 LX LENS

## LIGHTING DATA (EN 1838)

The EN 1838 standard requires safety lighting near every fire-fighting and alarm system as well as first-aid equipment. We have developed the F1 lens for this purpose. The high-performance lens focuses the light according to the specifications of EN 1838 so that a vertical illuminance of 5 lx is achieved.

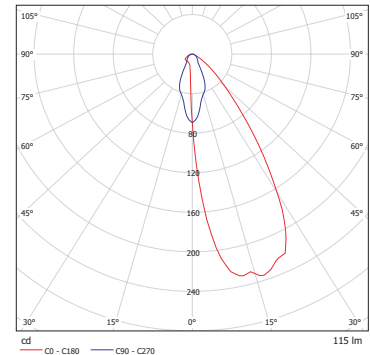
Normative illumination with 5 lx according to EN 1838 and ISO 23601 is required for:

- Fire-fighting equipment (fire extinguishers)
- Safety equipment (first aid boxes)
- Signalling equipment (manual fire detectors)
- Escape and rescue plans

## 5 LX LENS FOR FOCUSSED LIGHT



F1 LENS  
Installation  
height up to  
3,5 m



The EN 54

Non-automatic fire detectors must be installed at a height of 140 cm (+/- 20 cm) above the floor.

